

Southglade Newsletter

April 2026



Dear Parents / carers,

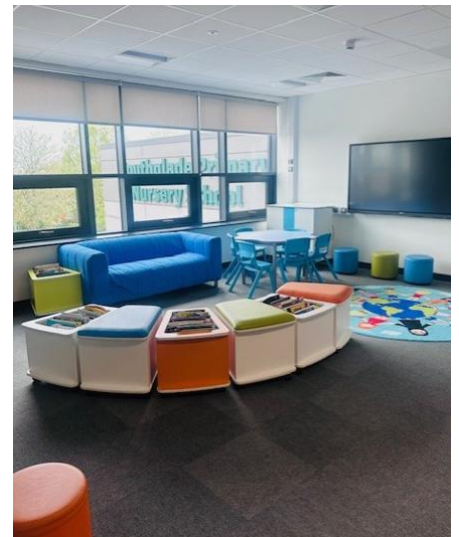
As we approach the end of our second week in our new school building, it has been a real pleasure to see how positively the children have settled in. While we are all still adjusting to our new surroundings, our daily routines are beginning to feel more familiar, and the calm, purposeful atmosphere around school has been wonderful to see. The building itself is truly beautiful, and class teachers will be in touch later this half term to invite you in to visit your child's classroom. I would like to extend a huge and heartfelt thank you to you all for your ongoing support and understanding as we continue to operate alongside the final phase of the build, including the demolition of the old school and construction of our new playground. Although outdoor space is currently limited, the children have shown great resilience and adaptability. Your patience and encouragement throughout what has been, at times, a disruptive process is very much appreciated, and we are incredibly grateful to have such a supportive school community as we move into this exciting new chapter together.

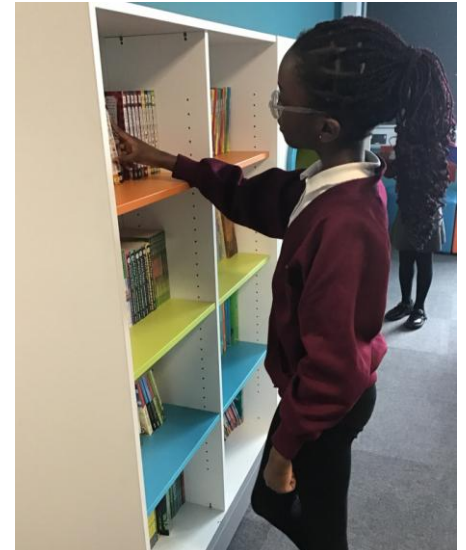
New Build Update

The demolition of the old school and the construction of our new playground begins...



Our first days in our new school





We're on Instagram!

We're pleased to let you know that the school now has an official Instagram account, where we'll be sharing snapshots of school life, celebrating pupils' achievements, and keeping you up to date with events and activities. Please do follow us to see what's happening in and around our new school and to help us celebrate our wonderful community.

Parent Voice

Now that we are in our new school building, we would love to hear your suggestions about how we can continue to make changes to improve the provision we provide at Southglade. Please send any suggestions to admin@southglade.nottingham.sc.uk and will endeavour to put them into action.

Governor Vacancy

We still have a vacancy for a Parent Governor. This is a rewarding opportunity to support the school, contribute to key decisions, and help shape its future. Please contact the school office for further information or to express an interest.

Water Bottles and Sun Cream



As the weather has now warmed up it is essential that all children bring a water bottle to school each day. These are kept in the children's classrooms and **must only contain water**. Juice and fizzy drinks are not allowed, apart from being unhealthy, they are also very difficult to clean up if they were to get spilt. If a child forgets their water bottle, they will be provided with a disposable cup to use for the day.

We have also spoken to all the children about wearing sun cream to school and you may also want to provide a sun hat / cap on hot days for your child to wear at playtimes and lunchtimes. We request that sun cream is applied in the morning before school.

Valued Respected Believe to Achieve
Southglade Primary & Nursery School

STAY CONNECTED

BY FOLLOWING OUR SOUTHGLADE INSTAGRAM ACCOUNT

@SOUTHGLADEPRIMARYSCHOOL

Sports Days and Summer Fair

Unfortunately, due to the limited outdoor space available during the final phase of the new school build, we have had to make the difficult decision to cancel this year's Sports Days and Summer Fair. At this stage of the project, access to the outdoor areas is not sufficient to safely accommodate large outdoor events. We understand that this may be disappointing and thank parents and carers for their continued patience and understanding. We look forward to bringing these much-loved events back once the building work is complete and full access to our outdoor areas is restored.

Lost Property



Please note that in our new school building we no longer have a central lost property box. We are doing our very best to reunite lost items with children as they are found; however, this is extremely difficult when clothing or belongings are not clearly named. We kindly ask that **all items of clothing and personal belongings are labelled with your child's name**, as this allows us to return lost items quickly and efficiently. During the day, children often remove jumpers, cardigans and coats in classrooms, shared areas and outdoors, and unnamed items are very hard to trace once separated from their owner. Your support with this is greatly appreciated.

Attendance



Thank you to everyone who has supported attendance so far this year. The government is clear that children should be in school as much as possible, as there are strong links between good attendance, academic achievement and future life chances.

Our whole-school attendance currently stands at **94.79%**. With the national target set at **96% or above**, we know that by working together we can improve this further. Attending school every day really does make a difference, so we appreciate your continued support in ensuring children are in school, on time, whenever they are well enough to attend

Well done to 4H who are current attendance leaders for the year with a fantastic 96%.



Class Number	Polar Bears	Penguins	1H	1E	2W	2H	3ES	3LS	4M	4H	5F	5S	6M	6F
Attendance	89%	91%	93%	95%	94%	95%	96%	93%	94%	96%	93%	95%	95%	94%

Please be reminded that any child whose attendance falls below **90%** is classed as a *persistent absentee*. Where a child of compulsory school age, who is registered at a school, fails to attend regularly, the parent may be committing an offence under **Section 444(1) of the Education Act 1996**. The government is clear that children should be in school as much

**MOMENTS
MATTER,
ATTENDANCE
COUNTS.**

as possible, as strong links exist between attendance, academic achievement and future life chances. Parents should also note that taking children out of school for unauthorised holidays will result in the issuing of a fixed penalty (fine).

If your child is too unwell to attend school, please ensure that you contact the school **before 9:00am on the first day of absence**, and on each subsequent day. You can leave a message on the answerphone stating your child's name, class and reason for absence, or email the same information to **admin@southglade.nottingham.sch.uk**. This helps us avoid unnecessary phone calls and home visits. If we do not hear from you, or are unable to make contact, a home visit will be carried out.

As a school, we are working hard to ensure pupils attend as regularly as possible. This includes a dedicated attendance team who monitor absence daily, take appropriate action where needed, and a range of incentives to reward children and classes with good attendance.

Uniform



Thank you for your continuing support of the uniform policy and ensuring your children are always dressed in the correct uniform. Our uniform policy can be found on our website:

[Uniform Information | Southglade Primary School](#)

In summer, children are permitted to wear burgundy and white or red and white gingham school dresses or play suits— no other colours are allowed. These can be purchased from any of the large supermarket chains. Pupils are also permitted to wear black or grey school shorts. Inappropriate clothing or footwear will result in us lending a child appropriate clothing to wear for the day or if their footwear is deemed unsafe to play out in then they may be asked to stay in at playtimes and lunchtimes.

Please can I remind you that crocs and flip flop style sandals are not allowed, and trainers must be all black.

If you are struggling to provide the correct uniform including school shoes and would like support with this then please see a member of staff.

School Uniform:	
✓	Burgundy sweatshirt or cardigan
✓	Grey or black trousers or school skirt/pinafore
✓	White school shirt /blouse or burgundy or white polo shirt
✓	Grey, black or white socks or tights
✓	Black school shoes
✓	On warm days - burgundy and white or red and white / checked school dresses or playsuits may be worn.
✓	School fleeces, reversible jackets, burgundy book bags and rucksacks are also available.
PE kit:	
✓	White T-shirt; black shorts; and plimsolls or trainers.
✓	No other sports wear (including football kits) are permitted to be worn.
✓	We have spare PE kit in school for children who forget their kit or bring inappropriate attire.

School are happy to accept donations of good condition second hand school uniform e.g. items your child may have outgrown that we can pass on to other parents at our nearly new uniform sales.

Free School Meals

If, due to the recent events, your working situation has changed you may now be eligible for benefits related free school meals. Please follow the link below which will take you to the on-line application form. If your application is successful and you qualify for FSM, you will then be entitled to receive for your child/ren either a free Southglade school bag, Southglade fleece or an item of uniform of your choice,



<https://www.nottinghamcity.gov.uk/information-for-residents/education-and-schools/benefits-for-school-aged-children/free-school-meals-and-free-milk/>

As a school, we'll also receive extra funding called 'pupil premium'. We use this extra money to improve educational provision and resources to help pupils reach their full potential regardless of their background or financial situation.

Dates for your Diary:

Monday 4th May - May Bank Holiday (School closed)

Monday 11th – Thursday 14th May – Year 6 SATs

Monday 25th May – Friday 29th May - May Half Term

Monday 1st June - Summer Term 2 starts

Tuesday 9th June – Well Being Day - Health

Friday 3rd July - INSET Day

Friday 24th July - Year 6 Leavers Assembly

Friday 24th July Last day of term

Monday 27th July – INSET Day

Tuesday 28th July – Monday 31st August – summer holidays

Tuesday 1st September – INSET Day

Wednesday 2nd September – first day of the new academic year

Once again thank you for your continuing support in the development of our school and your child's education.

Kind Regards

A. Thomas

Mrs Alison Thomas
(Head Teacher)



Southglade Primary and Nursery School

Opened 15th April 2026